

U-LITE™

*Monolithic Polycarbonate Standing Seam Panel
for Low Slope Canopies*



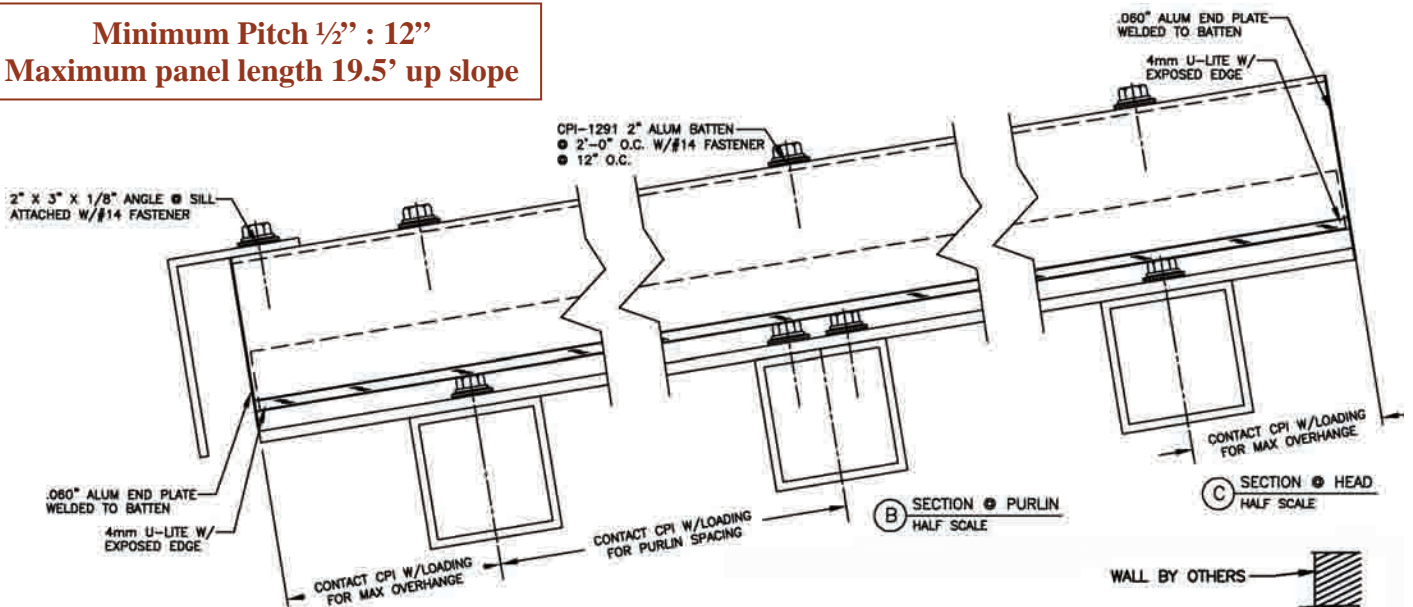
- Low Slope Design
- Modular Panel System
- Long Span
- Exposed Edge Design
- Simple Installation

- Optional Simple On-site Fabrication to Expedite Scheduling
- U.V. Stable Polycarbonate
- High Impact Resistance
- Translucent Glazing Provides Pleasant Daylight Transmission

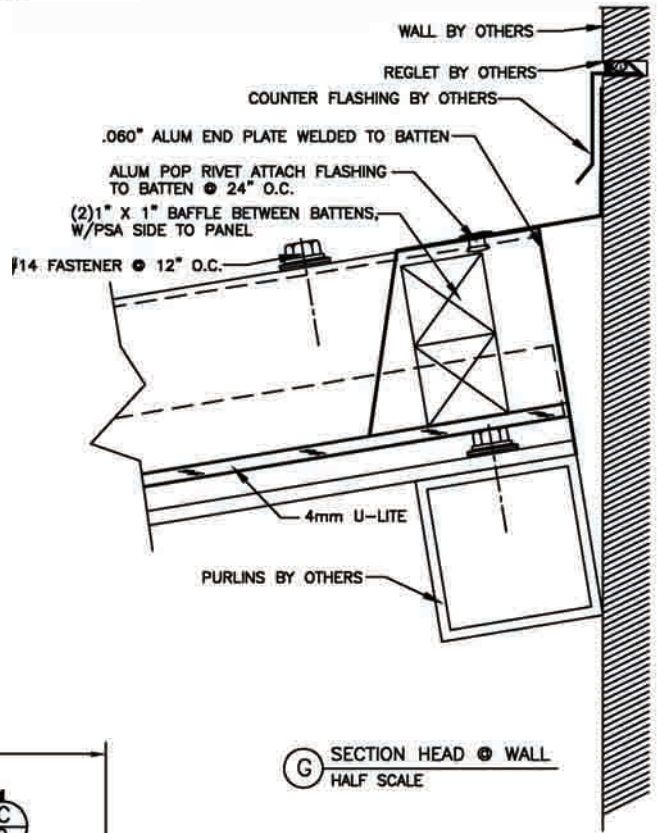


28662 N. Ballard Drive, Lake Forest, IL 60045
PH: 800-759-6985 FX: 847-816-0425
EMAIL: cpi@cpidaylighting.com
WEB: www.cpidaylighting.com

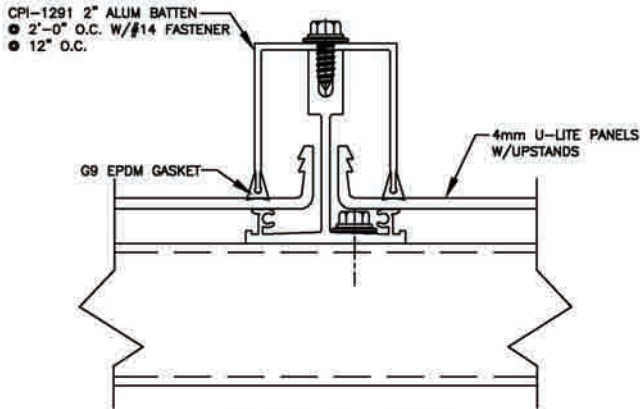
Minimum Pitch 1/2" : 12"
Maximum panel length 19.5' up slope



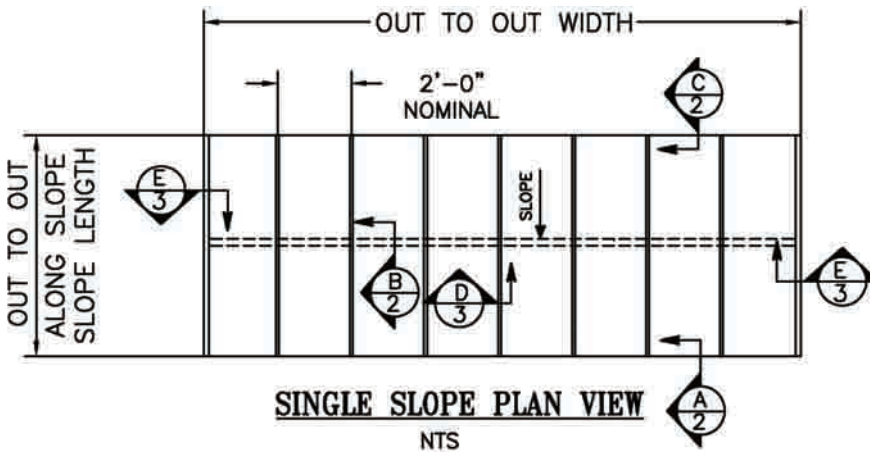
A SECTION @ SILL
 HALF SCALE



G SECTION HEAD @ WALL
 HALF SCALE



D SECTION @ TYP BATTEN
 HALF SCALE



Guidelines for Spans Between Supports with Combined Loads:

- Up to 10' Spans for 18 PSF live/20 PSF wind loads
- Up to 9' Spans for 25 PSF live/20 PSF wind loads
- Up to 8' Spans for 35 PSF live/25 PSF wind loads
- Up to 7' Spans for 50 PSF live/30 PSF wind loads
- Up to 6' Spans for 80 PSF live/30 PSF wind loads

NOTE: Live loads include drift loads

Please contact CPI for project specific span performance data

U-LITE™
 Monolithic Polycarbonate
 Standing Seam Panel



28662 N. Ballard Drive
 Lake Forest, IL 60045
 PH 847-816-1060
 FX 847-816-0425
 WWW.CPIDAYLIGHTING.COM